

TIMBERWOLF®

professional chippers & shredders



from the uk market leader

- 1 Welcome to Timberwolf
- 2 Road Towable Hydraulic Chippers
- 3 Tracked Hydraulic Chippers
- 5 Gravity Chippers
- 6 PTO Chippers
- 7 Shredders - Recycling, Volume Reduction
- 9 Service and Support
- 10 Timberwolf Finance
- 11 Insurance
- 12 Timberwolf Specifications

The uk market leader

*GREAT VALUE , GREAT CHOICE. FINANCE AVAILABLE,
CONTACT US FOR FURTHER INFORMATION*

Environmental Manufacturing LLP's policy is one of continued development and in accordance with this, we reserve the right to amend specification of our products as their development dictates. The images and specifications detailed in this brochure are advisory only and are given strictly without guarantee.

Telephone: 01449 765809

From 3" to 9" capacity, towed, tracked and PTO, there is a Timberwolf machine to suit your needs.

Welcome to Timberwolf – the first-choice wood chippers and shredders for the discerning professional

Timberwolf chippers have been the discerning professional's choice since 1997 when we became the UK's largest seller of commercial chippers. Today's Timberwolf is superbly engineered and built to purpose, having evolved through customer feedback and our constant attention to design and detail throughout the 6,000 machines built to date.

Inside this brochure you'll find a wide choice of tough hydraulic chippers with capacities from 125mm (5") right up to 225mm (9") in tracked, road tow and PTO variants, together with equally tough, but smaller, gravity feed models, available as hand-portable, road-tow and PTO to run from the back of a compact tractor. For recycling and volume reduction, take a look at the new Timberwolf S426 Shredder – a truly awesome machine with astonishing throughput capacity at an unbeatable price. Already under hot demand from councils, utilities and contractors, the compact and mobile S426 handles a huge range of materials and we recommend you make early contact with us to discuss your waste disposal requirements.

Visit our website and see this amazing machine in action!

Come and see us at one of the many trade shows we are attending and we will be very pleased to show you our range and explain the Timberwolf difference!

Go to timberwolf-uk.com for show details.



Our committed dealership network supports your Timberwolf throughout its long life. Our dealers offer demonstrations, sales services and the support of factory-trained technicians, providing expert service that is local to you. Timberwolf only works with dealers who are prepared to take your chipper purchase and ownership as seriously as you do. See page 9 for further details of our excellent Service & Support network.

Call us today or visit our website to find your local Timberwolf dealer.

As a British manufacturer we are hugely proud that for years we have ranked as the UK's first choice for professional chippers – this against around 30, mostly foreign, alternative brands. We intend to stay the UK's Number 1 choice and our rolling strategy of continual investment in Research & Development, manufacturing technique, dealer training and our unrivalled customer support network ensures that a Timberwolf is the best piece of arboricultural equipment you can invest in!



Telephone: 01449 765809

ROAD TOWABLE HYDRAULIC CHIPPERS

TW 125PH

Petrol engine, Hydraulic feed (unbraked)

- 125mm (5") cutting performance
- Sub 750kg towing weight
- Honda 20hp petrol engine



A compact hydraulic feed chipper with exceptional performance

Below 750kg tow weight, twin feed rollers, large feed funnel and auto-feed speed control makes this a truly professional hydraulic chipper at an affordable price.

Only when you start to chip will you understand how amazing this machine is. All of the design comes superbly together and you will find the feed funnel at the ideal feed height, the controls simple and easy to use, the rollers fast and powerful, the automatic feed speed controller extremely reactive and the job done in no time!

The machine weighs 575kg so can be towed on a normal driving licence (even for those who passed their driving test on or after 1st January 1997). The low centre of gravity and large wheels make it easy to tow on and off road. The machine weighs under 750kg so no brakes are fitted – handy if you are going extremely off road.

TW 150DHB

Diesel engine, Hydraulic feed, Braked

- 150mm (6") cutting performance
- Sub 750kg towing weight
- Kubota 35hp diesel engine



The most popular chipper in the UK for professional users

The TW 150DHB has been in production for over 13 years and is a very reliable, hard working machine that gives unbeatable performance with great value for money. As with all good machinery the difference is in the detail; here are just a few details that help to create the compact TW 150 model chipper:

- Feed funnel designed to assist feed rollers.
- Feed rollers each have 6 tough, independently mounted blades that bite into and grip material, allowing full power of the hydraulic motors to pull material in.
- Specially developed speed controller - gives consistent, rapid feed without overloading engine or blocking.
- Kubota V1505 4 cylinder watercooled diesel.
- Weight under 750kg (with fuel, oil, coolant and spare wheel).
- Residual value - after years of hard work, the TW 150 can be worth thousands more than some other makes of similar age and condition.

Email: info@timberwolf-uk.com

timberwolf-uk.com

From 3" to 9" capacity, towed, tracked and PTO, there is a Timberwolf machine to suit your needs.

ROAD TOWABLE HYDRAULIC CHIPPERS

TW 190TDHB (TURBO)

Turbo Diesel engine, Hydraulic feed, Braked road chassis

- 190mm (7½") cutting performance
- 1018kg towing weight
- Kubota 45hp diesel engine



Built to the highest standards

This is a contractors machine, heavily engineered to work 24 -7 and will satisfy the most demanding professional users.

Built to the very highest standards, it will tackle the toughest jobs with the minimum of maintenance. The TW 190TDHB (Turbo) takes everything learned from the TW 150DHB and makes it bigger and better. Because the chipper can not be built under 750kg it enables our designers to really maximize on the chipping performance available from the Kubota V1505 turbo diesel engine. Without the weight restrictions we are able to fit a larger rotor, bigger rotor housing, larger feed rollers and a huge feed funnel.

Not only is the machine sought after new, the same applies for secondhand ones too! After years of hard work the TW 190TDHB (Turbo) can be worth thousands more than some other makes of a similar age and condition when it comes time to replace.

TRACKED HYDRAULIC CHIPPERS

TW 190TFTR (TURBO)

Turbo diesel engine, Fixed width TRacking system

- 190mm (7½") cutting performance
- Total weight 1335kg
- Kubota 45hp diesel engine



A pure contractor's machine

This is a contractors machine, heavily engineered to work 24 -7 and will satisfy the most demanding professional users.

The Timberwolf 190TFTR (Turbo) is a 'go anywhere' tracked chipper with excellent off-road performance and a chipping ability to match.

Ideal for contracts where time is money. An exceptionally fast work rate from this compact, 'go anywhere' chipper.



TRACKED HYDRAULIC CHIPPERS

TW 150VTR

Variable width TRacking system

- 150mm (6") cutting performance
- Total weight 1080kg
- Kubota 35hp diesel engine



The most popular tracked chipper in the UK

Designed for the contractor and utility user, the TW 150VTR incorporates many features that make working in difficult or confined spaces possible.

State-of-the-art anti-vibration technology, extremely tough, one-piece detachable funnel with safety bar incorporated around all 4 sides for heightened safety, electro hydraulics incorporating variable track width, auto-feed speed control – all combined with the outstanding Kubota V1505 35hp 4 cylinder diesel engine.



The TW 150VTR has been in production since 2004 and is a very reliable, hard working machine that represents unbeatable performance vs value for money.

TW 190TVGTR

Turbo diesel engine, Variable Gradient TRacking system

- 190mm (7½") cutting performance
- Total weight 1873kg
- Kubota 45hp diesel engine
- Operator control platform



Maximum variability for optimum access, combined with superior chipping performance.

For those companies looking for maximum versatility and safety we offer the TW190TVGTR, incorporating the unique 'WolfTrack' safety system; a tracked chipper that is not only capable of adjusting its track width but can alter the angle of its body relative to ground gradient and increase height clearance to traverse obstacles.

While tracking on slopes, each track can be independantly extended as necessary to help maintain a level platform for the operator.

Ground clearance is increased by extending both tracks making the machine able to deal with extremely muddy/wading situations. The increased ground clearance also lets the chipper negotiate extremely uneven ground and pass over tree stumps.

Fitted with the 45hp V1505T (Turbo) Kubota diesel engine, this chipper has enough power and tricks up its sleeve to get into the most testing of environments; once there it has all the horse power and capacity to get the work done quickly and efficiently.

Telephone: 01449 765809

Email: info@timberwolf-uk.com

timberwolf-uk.com

From 3" to 9" capacity, towed, tracked and PTO, there is a Timberwolf machine to suit your needs.

GRAVITY CHIPPERS

TW 13/75G

Gravity feed chipper with engine

- 75mm (3") cutting performance
- Total weight 188kg
- Honda 13hp petrol engine



Perfect for landscapers and DIY

The Timberwolf 13/75G is built to cope with the full range of green garden waste and is the most effective and rugged 3" chipper available.

Positive blade feed draws material in, ensuring easy and safe operation. Robust design and ultra-long blade life means low running costs. Quite simply, no other gravity feed chipper performs as well or lasts as long.



This is a superb mini chipper that is far more capable than its size suggests.

The TW 13/75G is a commercial chipper, designed to work all day, every day.

TW 18/100G

Gravity feed chipper with engine

- 100mm (4") cutting performance
- Total weight 375kg
- Briggs & Stratton 18hp petrol engine



The best gravity feed chipper on the market

With its positive blade feed action, large feed funnel, ability to quickly process 100mm (4") diameter material at up to 1 ½ tonnes per hour, low centre of gravity and good ground clearance, the Timberwolf 18/100G is a versatile machine suited to many applications.



PTO CHIPPERS

TW PTO/100G

Power Take Off Hydraulic feed shredder for attaching to tractor

- 100mm (4") cutting performance
- Total weight 268kg



The best PTO gravity feed chipper on the market

The Timberwolf PTO/100G has been designed for the medium to large estate and landscape gardener who has access to a compact tractor. This chipper fits onto any compact tractor that has a 6-spline 540rpm power-take-off shaft. Ideally suited to tractors from 21 to 40hp, this chipper will easily tackle branches from 75mm (3") to 100mm (4") depending on tractor horsepower. The machine is fitted to a 'slow tow' chassis and does not require the use of the 3 point linkage.



TW PTO/150H

Power Take Off Hydraulic feed chipper for attaching to tractor

- 150mm (6") cutting performance
- Total weight 400kg



Perfect for landowners, estates and golf clubs

This chipper fits onto any compact tractor that has a 6-spline 540rpm power-take-off shaft, category 1, 3 point linkage and 12 volt electric supply. Unlike some PTO chippers this chipper is completely self-contained with its own hydraulic oil tank. (Chippers without the oil tank rely on the tractor's hydraulic oil supply and the tractor must be modified to allow the 2 machines to work together.) The TW PTO/150H is ideally suited to tractors from 25 to 60hp.

This chipper will easily tackle branches from 125mm (5") to 150mm (6") depending on tractor horsepower.



Telephone: 01449 765809

Email: info@timberwolf-uk.com

timberwolf-uk.com

From 3" to 9" capacity, towed, tracked and PTO, there is a Timberwolf machine to suit your needs.

SHREDDERS - RECYCLING, VOLUME REDUCTION

TW S426TDHB SHREDDER

Turbo Diesel engine, Hydraulic feed, Braked road chassis

- 225mm (9") cutting performance
- 426mm x 230mm infeed
- 1350kg towing weight
- Kubota 4 cylinder turbo diesel



FROM THIS...



...TO THIS

Stunning performance on a wide variety of material

And now for something completely different...

The Timberwolf S426TDHB provides performance that has never been available to you at this price. It is no exaggeration to say that even if you spend twice as much you will find it difficult to find a shredder that can match the TW S426TDHB.

The Timberwolf S426TDHB meets the demand for a heavy duty, professional shredder. Whether your problem is bulky green waste, tree brush, pallets, packaging materials, cardboard or contaminated timber, this versatile unit will save you time and money.

Stunning performance on a wide variety of material makes this the shredder of choice for anyone with a commercial-sized waste problem and a tight budget.

We want you to see for yourself just how capable this shredder is. Please call and arrange a no obligation demonstration. There is nothing as convincing as seeing a TW S426TDHB eradicate your problem!



SHREDDERS - RECYCLING, VOLUME REDUCTION

TW S426TFTR SHREDDER

Turbo diesel engine, Fixed width, TRacking system

- 225mm (9") cutting performance
- 426mm x 230mm infeed
- Total weight 1840kg
- Kubota 4 cylinder turbo diesel
- Operator control platform



Stunning performance with maximum manoeuvrability we offer the S426 Shredder with tracks!

With all the shredding advantages of the S426 road row version and the ability to go anywhere, the TW S426TFTR makes short work of clearing sites that are difficult to get to or work on. Roadside and motorway scrub clearance become easy and cost effective with this amazing shredder.

As with all efficient operations, the trick is to get the machine to the material, not the other way round! If your waste is not always easy to get to we recommend this tracked shredder.

Maximum versatility and performance in one machine!



TW PTO S426 SHREDDER

Power Take Off Hydraulic feed shredder for attaching to tractor

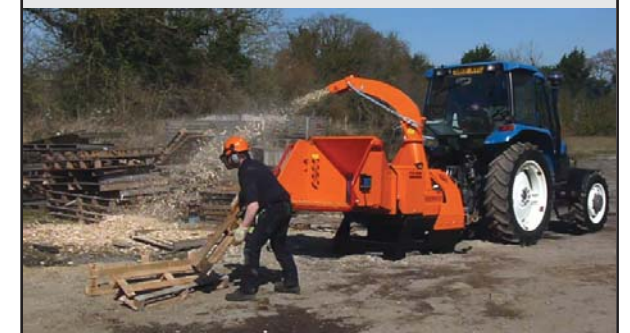
- 225mm (9") cutting performance
- 426mm x 230mm infeed
- Total weight 1260kg (without prop shaft)



A PTO version of the popular S426 multi-purpose shredder.

Aimed at tractors in the 80 to 115hp range, fitted with 1000rpm PTO, it is a valuable, cost effective option for operators with a requirement for a shredder to run from a tractor.

Most local authorities and contractors will be able to utilise this shredder with their existing tractors, extending their use and versatility - keeping costs to a minimum and equipment utilised to the maximum.



Telephone: 01449 765809

Email: info@timberwolf-uk.com

timberwolf-uk.com

From 3" to 9" capacity, towed, tracked and PTO, there is a Timberwolf machine to suit your needs.

SERVICE & SUPPORT

A Timberwolf chipper or shredder is a vital source of income to its owner and to ensure that it delivers continuously we establish a lifetime relationship with our customers. This relationship begins at your first enquiry when we will help you to select the machine that's best suited to your needs, continues to a seamless order and delivery procedure and then ensures that you receive the best working support backup for your machine available in the UK throughout its long life. Our customers depend on their Timberwolf machine as the core of their business and excellent product support ensures that a Timberwolf is continually available as the essential tool it is.



We have been working with dealers on woodchipper sales and service since 1993. Over 70% of the population is within one hour of a Timberwolf arboricultural machinery specialist.

A SOUND INVESTMENT

Timberwolf sell more machines to more people than any other make available in the UK. Our machines work extremely well for many years and when the time comes to sell you will find it is highly sought after and will fetch a premium over most other makes. We offer you a wide range of machines to suit most applications. You can purchase them from a specialist dealer at a discounted price. The local dealer is on hand throughout the life of the machine to ensure it performs as designed. The dealer is supported and trained by Timberwolf - the manufacturer. When the time comes to sell, you will almost certainly get more value than any other make of comparable chipper of a similar age.

TIMBERWOLF - A SOUND INVESTMENT FOR YOUR BUSINESS.



Telephone: 01449 765809

TIMBERWOLF FINANCE

Subsidised finance available for all new Timberwolf chippers purchased through an authorised dealer!*

Timberwolf Finance has been set up to make ownership of a Timberwolf chipper or shredder more affordable. New machines purchased through an authorised Timberwolf dealer are eligible for subsidised finance through a variety of finance options that can be adapted to suit specific business needs and repayment criteria.

To keep your finance payments as low as possible, Timberwolf make a cash contribution to Timberwolf Finance thereby reducing your monthly payments.

The Timberwolf contribution amount varies depending on the value of the machine, but is significant enough to make this the most competitive finance package available for your new Timberwolf chipper.

Most companies elect to pay over 3 to 7 years to keep their monthly payments as low as possible. Timberwolf still contributes to these longer-term deals and that subsidy produces one of the cheapest-rate loans available today.

The significant feature of Timberwolf subsidised finance is that you are free to negotiate the price of your Timberwolf chipper or shredder with the dealer. It does not rely on you buying the machine at an inflated price to cover the finance.

The team at Timberwolf Finance are familiar with the equipment and understand the requirements of the arboricultural and hire industries. They offer bespoke packages to suit your particular requirements or circumstances.

**CALL TIMBERWOLF FINANCE TODAY ON
0845 686 0677**

Written quotations are available on request from:

**Timberwolf Finance
53 York Road
Northampton
NN1 5QJ**



TIMBERWOLF FINANCE - IT'S NOT ONLY ABOUT CHIPPERS AND SHREDDERS!

Many companies enjoy the benefit of using a specialist finance house for all of their business purchases, keeping paperwork to a minimum and asset management a simple process. Timberwolf Finance is not restricted to chipper or shredder purchase.**

It can be used to help you purchase a new truck, new stump grinder or even a new computer system, or anything in between!

*Subsidised finance is only available against new Timberwolf equipment purchased through an authorised Timberwolf dealer. Subsidy values vary depending on machine purchased and finance period. Timberwolf Finance is a trading style of Bond Investments.
**Finance is for business purposes only in the UK for new Timberwolf equipment and is subject to credit acceptance and any qualifications in government or company policy. Finance is available on up to 50% of RRP or the balance to finance whichever is lower.
VAT - Hire Purchase: Full VAT due on signing. Lease: VAT payable on each rental as it falls due.
***Only available throughout England, Scotland and Wales.

Email: info@timberwolf-uk.com

timberwolf-uk.com

From 3" to 9" capacity, towed, tracked and PTO, there is a Timberwolf machine to suit your needs.

INSURANCE

For some time we have been aware that insurance for your wood chippers has been either difficult to obtain or in some cases very expensive. As a result we have negotiated a special insurance package which, subject to certain conditions, will significantly reduce the cost to insure your Timberwolf wood chipper. Policies are available for all of our models for either one or three years.

TRUST INSURANCE - LIABILITY INSURANCE FOR TREE SURGEONS

Trust Insurance Services had placed an exclusive Employers' Liability and Public Liability facility underwritten by HCC International Insurance Company. We are now able to offer this in conjunction with our chipper insurance facility.

Trust only offer quotations to qualified tree surgeons that have completed their NPTC and comply with all relevant health and safety requirements. Discounts will be given for experience and the length of time since qualifications were gained. Consequently you will not pay for the claims of unqualified tree surgeons.

Key features are:

Employers' liability limit of £25,000,000

Public Liability limits to £50,000,000

Attractive minimum premiums

Free rehabilitation for all muscular and skeletal injuries, speeding up the return of your workforce and minimising the adverse effect on your claims record.

TRUST INSURANCE - CHIPPER AND TOOLS INSURANCE

We have an exclusive facility underwritten by HCC International Insurance Company that allows us to insure your machinery at competitive premiums.

Key features are:

Nil excess in the event of theft when security fitted

Free European cover

Three-year discounted insurance for new units

£500 excess in the event of all other claims

New for old cover available

Minimum premium £315 including taxation

For further information call 01604 492644 or visit www.trustinsurance.co.uk



SPECIALIST SPECIFICATIONS

TW 125PH
TW 150DHB
TW 190TDHB
TW 150VTR
TW 190TFTR
TW 190TVGTR

ROAD TOWABLE HYDRAULIC CHIPPERS

ENGINE	FUEL	TANK CAPACITY	WEIGHT	LENGTH towing/working	WIDTH	HEIGHT	MAX DIA. INFEED	THROUGH-PUT	FEED METHOD	BLADES
--------	------	---------------	--------	--------------------------	-------	--------	-----------------	-------------	-------------	--------

Honda v-twin	Petrol	18 litres (4 gallons)	575kg	2625mm 3165mm	1335mm	2270mm	125mm (5")	Up to 2 tonnes per hour	Twin hydraulic rollers c/w No Stress	2 x 101mm (4") fully hardened
--------------	--------	-----------------------	-------	------------------	--------	--------	------------	-------------------------	--------------------------------------	-------------------------------

35hp Kubota 4-cylinder	Diesel	18 litres (4 gallons)	737kg	3025mm 3665mm	1400mm	2260mm	150mm (6")	Up to 4 tonnes per hour	Twin hydraulic rollers c/w No Stress	2 x 101mm (4") fully hardened
------------------------	--------	-----------------------	-------	------------------	--------	--------	------------	-------------------------	--------------------------------------	-------------------------------

45hp Kubota 4-cylinder turbo	Diesel	51 litres (12½ gallons)	1018kg	3385mm 3990mm	1510mm	2310mm	190mm (7½")	Up to 6.5 tonnes per hour	Twin hydraulic rollers c/w No Stress	2 x 127mm (5") double sided, fully hardened
------------------------------	--------	-------------------------	--------	------------------	--------	--------	-------------	---------------------------	--------------------------------------	---

TRACKED HYDRAULIC CHIPPERS

ENGINE	FUEL	TANK CAPACITY	WEIGHT	LENGTH towing/working	WIDTH	HEIGHT	MAX DIA. INFEED	THROUGH-PUT	FEED METHOD	BLADES
--------	------	---------------	--------	--------------------------	-------	--------	-----------------	-------------	-------------	--------

35hp Kubota 4-cylinder	Diesel	18 litres (4 gallons)	1080kg	2775mm	700mm-1100mm (track width)	2300mm	150mm (6")	Up to 4 tonnes per hour	Twin hydraulic rollers c/w No Stress	2 x 101mm (4") fully hardened
------------------------	--------	-----------------------	--------	--------	----------------------------	--------	------------	-------------------------	--------------------------------------	-------------------------------

45hp Kubota 4-cylinder turbo	Diesel	51 litres (12½ gallons)	1335kg	2550mm 3110mm	1350mm	2360mm	190mm (7½")	Up to 6.5 tonnes per hour	Twin hydraulic rollers c/w No Stress	2 x 127mm (5") double sided, fully hardened
------------------------------	--------	-------------------------	--------	------------------	--------	--------	-------------	---------------------------	--------------------------------------	---

45hp Kubota 4-cylinder turbo	Diesel	51 litres (12½ gallons)	1873kg	2460mm 3100mm	1480mm (2010 with ext. tracks)	2350mm (2770 fully extended)	190mm (7½")	Up to 6.5 tonnes per hour	Twin hydraulic rollers c/w No Stress	2 x 127mm (5") double sided, fully hardened
------------------------------	--------	-------------------------	--------	------------------	--------------------------------	------------------------------	-------------	---------------------------	--------------------------------------	---

Telephone: 01449 765809

Email: info@timberwolf-uk.com

timberwolf-uk.com

From 3" to 9" capacity, towed, tracked and PTO, there is a Timberwolf machine to suit your needs.

PTO CHIPPERS

ENGINE	FUEL	TANK CAPACITY	WEIGHT	LENGTH tray up/down	WIDTH	HEIGHT	MAX DIA. INFEED	THROUGH- PUT	FEED METHOD	BLADES
TW PTO/100G 18 - 40hp @ PTO (540 rpm)	N/A	N/A	268kg	2460mm 1935mm	1000mm	2180mm	100mm (4")	Up to 1 tonne per hour	Positive blade feed	2 x 177mm (7") fully hardened
TW PTO/150H 25 - 60hp @ PTO (540 rpm)	N/A	N/A	400kg	1775mm 2880mm	1110mm	2165mm	150mm (6")	Up to 3 tonnes per hour	Twin hydraulic rollers c/w No Stress	2 x 101mm (4") fully hardened

GRAVITY CHIPPERS

ENGINE	FUEL	TANK CAPACITY	WEIGHT	LENGTH funnel up/down	WIDTH	HEIGHT	MAX DIA. INFEED	THROUGH- PUT	FEED METHOD	BLADES
TW 13/75G 13hp Honda 4 stroke	Unleaded petrol	6.5 litres (1½ gallons)	188kg	1565mm (working) 815mm (removed)	800mm	1600mm	75mm (3")	0.75 tonnes per hour	Positive Blade Feed	1 x 177mm (7") fully hardened
TW 18/100G 18hp Briggs & Stratton 4 stroke	Unleaded petrol	8.5 litres (1.9 gallons)	375kg	2910mm 2560mm	1280mm	2195mm	100mm (4")	Up to 1.5 tonnes per hour	Positive Blade Feed	2 x 177mm (7") fully hardened

SHREDDERS

ENGINE	FUEL	TANK CAPACITY	WEIGHT	LENGTH towing/working	WIDTH	HEIGHT	INFEED SIZE	THROUGH- PUT	FEED METHOD	HAMMERS
S426TDHB 45hp Kubota 4 cylinder turbo	Diesel	33 litres (7¼ gallons)	1350kg	3600mm 4220mm	1506mm	2220mm	426mm X 230mm	Up to 3 tonnes per hour	Hydraulic roller	18 single form hammers
S426TFTR 45hp Kubota 4 cylinder turbo	Diesel	33 litres (7¼ gallons)	1840kg	3100mm 3775mm	1355mm	2500mm	426mm X 230mm	Up to 3 tonnes per hour	Hydraulic roller	18 single form hammers
PTO S426 80 - 115hp @ PTO (1000 rpm)	N/A	N/A	1260kg	2205mm 2795mm	1355mm	2420mm	426mm X 230mm	Up to 3 tonnes per hour	Hydraulic roller	18 single form hammers



Dealer Address Stamp

TIMBERWOLF®

Entec House, Tomo Industrial Estate,
Stowmarket, Suffolk IP14 5AY
Telephone: 01449 765809 Fax: 01449 765808
Email: info@timberwolf-uk.com
timberwolf-uk.com

Telephone: 01449 765809

Email: info@timberwolf-uk.com

timberwolf-uk.com